

# REBON

ONE-STOP SOLUTIONS FOR CABINETRY PROJECT



**HANGZHOU DE&E SMART HOME CO.,LTD**

No.98 Hongxing Road, Xiaoshan, Hangzhou City, Zhejiang Province, China



Kitchen Cabinet



Wardrobe



Full House Solution



Appliance

# REBON

ONE-STOP CABINETS SOLUTION

# CATALOG

Create Various Style of Full House Solution



Kitchen Cabinet



Wardrobe



Bathroom Vanity



Living & Dining Room



Tatami



Study



Children's Room

<b>01</b>	About DE&E Group	03-04
<b>02</b>	About Rebon <ul style="list-style-type: none"><li>▪ 3 Manufacturing Bases</li><li>▪ Strategic Partners</li><li>▪ Rebon Honors</li></ul>	05-18
<b>03</b>	Rebon Cabinets Collections	19-76
<b>04</b>	Door Styles & Colors	77-84
<b>05</b>	DE&E Kitchen Appliances	85-86

MOST  
ADVANCED  
INTELLIGENT  
FACTORY  
IN CHINA

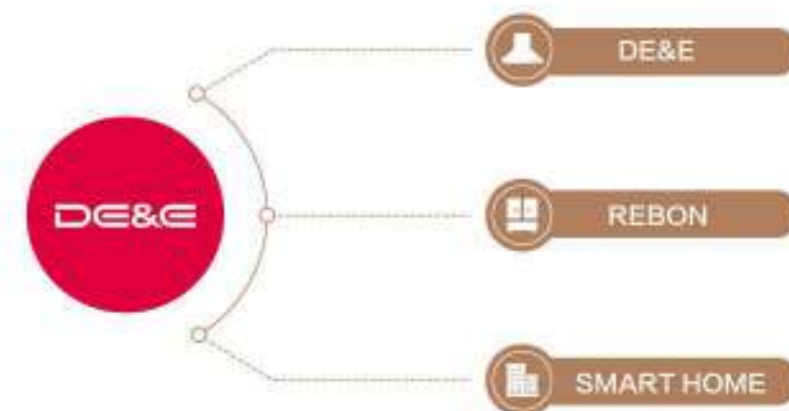
## ABOUT REBON

### DE&E Holding Group

Originally established in 1992, DE&E has been providing high-quality products for over 5 million families in 40 countries. We advocate tasteful value experience, bring healthy and high-efficient solutions to kitchen environment for the general consumers, and create a happy and delightful golden life.

DE&E has invested 100 million US dollars to build the most advanced intelligent factory for kitchen appliances in China. The factory covers an area of 78,000m<sup>2</sup>, construction area nearly 195,000m<sup>2</sup>, and the yearly output value can up to 800 million US dollars.

By taking industry 4.0 as the design concept, network system and IOT (internet of things) as technological base, DE&E intelligent factory successfully implements intelligent operation during the whole process from product designing, procurement, manufacturing to warehousing logistics. It becomes a technical transforming model from traditional kitchen appliances manufacturer.



Hangzhou Rebon Cabinets Co., Ltd. is a subsidiary of DE&E Holding Group Co., Ltd. which is located in Jingjiang industrial zone of Xiaoshan District, Hangzhou City, Zhejiang Province, only 10 minutes from Hangzhou International Airport.



## Rebon Cabinets, Art Brighten your Life

We are a leading manufacturer of kitchen cabinets, wardrobes, and vanities for home furnishings. The Company has been recognized as one of the "Top 10 Chinese Cabinet Brands" for seven consecutive years, as well as receiving accolades such as the "China Red Star Design Award." We use the latest technology and equipment, including German-imported machines, to produce cabinets of the highest quality.

Our company offers a wide range of materials, including lacquer, melamine, PVC, solid wood, UV, and acrylic, and our experts are here to assist you with design inspiration and material selection for your project. Our commitment to quality and attention to detail is reflected in our ISO14001:2015 Environmental System Certification and Environmental Labelling Certification.

### Rebon Vision

Our vision is to be a leading provider of elegant, high-quality products and services, satisfying our customers' pursuit of beauty and a comfortable, fashionable, and life experience. Our dedication to original design and international standard technology sets us apart.

### Rebon Concept

100% Dedicated 100% Original Design 100% International Standard Technology





### DE & E Kitchen Appliance Factory

With an investment of 700 million yuan and an area of 200000 square meters, the factory is a large-scale modern enterprise specializing in the production of range hoods, household stoves, disinfection cabinets, steaming boxes, ovens, dishwashers, water heaters and other kitchen and bathroom appliances.



### Rebon Cabinets No. 1 Factory

The factory invested 260 million yuan, and the factory covers an area of 36,000 square meters. It has advanced production lines such as German Homag and put it into use at the end of May 2010.



### Rebon Cabinets No.2 Factory

The factory has invested 150 million yuan and the factory covers an area of 30,000 square meters, which has been put into use in 2020, based on the concept of industrial intelligence 4.0.

## 3 MANUFACTURING BASES

### Build an Asian Model Factory

All our products, including solid wood and lacquer kitchens, are developed through independent R&D and in-house production. With the goal of "Building an Asian Model Factory," we use industry-leading equipment imported from Germany and Italy, and our eight production lines are based on the concept of industrial intelligence 4.0, with flexible custom thinking for upgrades. Our efficient production methods have increased efficiency by over 62% and maintained a high qualified rate of 99.8%, reducing the overall cost of production.





German Homag Cutting Machine Computer Controlled

German Homag Drilling Machine Computer Controlled



German Vacuum Laminating Machine

German Homag Edge Banding Machine

German Homag CNC Machine

## DOMESTIC PROJECTS



**HANGZHOU**  
Westlake University

Quantity: 1380 units kitchen cabinets



**SHENZHEN**  
Mingju Real Estate

Quantity: 1040 units kitchen cabinets



**BEIJING**  
Beijing Jiaotong University

Quantity: 596 units kitchen cabinet and bathroom cabinets



**FUJIAN**  
Fujian Sunshine Industrial Development

Quantity: 361 units kitchen cabinet, wardrobe and bathroom cabinets

vanke 万科

SUNAC 融创  
至臻 · 致远

seazen  
新城控股

中梁控股集团  
ZHONGLIANG HOLDINGS GROUP

YanGO 阳光城  
YANGGANG GROUP

大发地产 DFL

.....

## OVERSEAS PROJECTS



## Norway

Quantity: 234 apartments  
lacquered kitchen cabinets



## India

Quantity: 514 apartments melamine  
kitchen cabinets



## US

Quantity: 217 apartments kitchen  
cabinets and bathroom cabinets



## Qatar

Quantity: 212 units kitchen cabinets  
and bathroom cabinets



## Dubai

Quantity: 315 kitchen cabinets  
and wardrobes



## Pakistan

Quantity: 156 units kitchen cabinets  
and 468 wardrobes

## OVERSEAS PROJECTS



## Australia

Location: Melbourne's Docklands precinct  
Quantity: 437 units kitchen cabinets and bathroom cabinets

## Australia

Location: Podium Parking Marco Melbourne, Southbank  
Quantity: 432 apartments kitchen and bathroom cabinets, all 2 pac (lacquered paint) cabinets

## UK

Location: Croydon's newly regenerated town centre  
Quantity: 183 units kitchen cabinets

## Bahrain

Quantity: 112 apartments white high gloss kitchen cabinets

## Canada

Quantity: 300 apartments melamine kitchen cabinets and bathroom cabinets

## Philippines

Quantity: 375 units of kitchen cabinets, 1100 closets and 1000 lavatories

# REBON HONOR



## REBON HONOR

REBON has been always caring for product quality, staff safety, environment protection and customer satisfaction.



ISO9001



ISO45001



ISO14001



A modern kitchen with a dark island, white cabinetry, and a dining table with two chairs. The kitchen features a dark island with a wooden countertop, a white wall with a built-in oven, and a dark wall with a built-in range hood. The dining table is round with a wooden top and black legs, and the chairs are black with orange seats. The floor is a light gray color. The overall design is minimalist and modern.

## KITCHEN

## IDEAL HOME

It combines the two seemingly contradictory elements of "simple" and "luxury" through classic color matching and minimalist design language. At the same time, diversified materials such as skin-friendly panels, glass, wood grain, leather grain, and stone, light luxury soft decoration, and the art of light and shadow are incorporated to give the space vitality.





## FREE TIME II

In the main colors of matte black and skin white, feel the ultimate pure meaning, just like the black and white piano keys, compose a moving melody, adjust people's spirit and living space, and outline the interest of life in details. The designer considered the transition between black and white, and used lava gray to ease the overall tone and make the space more layered.

**LATTE**

Inspired by latte, it is wrapped in tenderness, mixed with poetry, and inadvertently exudes a sense of modern city. It is a gentle response to the rigorous life of urban elites, allowing people to brush off the tiredness of life and work and start a relaxed life. When the coffee color meets the mysterious Morandi red, the space is full of visual impact.



## JADE ELEGANCE

As clean and pure as white jade, as bright as moonlight, JADE ELEGANCE aims to create a space that meets the aesthetics of women. Large areas of creamy white give the space a gentle tone, and the yellow metal strips on the door panels add a touch of sophistication and elegance. With soft and comfortable soft furnishings and an open space pattern, it brings a free and leisurely atmosphere to the home.

## BEDROOM

## Closet

## Study



Living Room



## GOLDEN YEARS

GOLDEN YEARS advocates new minimalism, discards all superfluous things, strives to create a natural space full of tranquility and gentleness.

The entire living space adopts the Morandi color scheme. The large area of jazz white is clean and simple, bright, and thorough; the Morandi coffee is warm and gentle... The overall color tone makes every scene a kind of tranquil and soothing beauty.



## GRAND HOME

The lifestyle of urban elites should be rich both materially and spiritually. The designer hopes to reflect the elites' yearning and love for elegant and luxurious life through a simple, exquisite, and textured space. GRAND HOME embodies delicacy and elegance in every aspect, whether it is style, color tone, material, hardware, or soft decoration.



Living Room

## CARIBBEAN COAST

The "CARIBBEAN COAST" design is avant-garde and bold. In terms of materials, sintered stone are selected as the main material of the door panels. The kitchen is cleverly designed. The high cabinet and cooking area are concealed behind electric doors.

**KITCHEN**

**KITCHEN**

## URBAN IMPRESSION

Simple geometric outline reflects the simplicity and elegance of the whole space.

Large areas of black and brown create a warm and advanced home atmosphere.

Every detail of the whole house design-"Impression of the City" has a distinct personality, which is both luxury and fashionable, minimalist and romantic.



**LIVING ROOM****55° GREY**

German industrial style kitchen, low-key and rich in texture, minimalist design, makes the cabinet very modern, with wooden dining table, bringing a touch of warmth and nature.





## PLATO

Newest Italian style wood finishes kitchen cabinet --PLATO first appearance. This series mainly design with solid wood veneer door, it can show the luxury of full house but the price is much cheaper than solid wood.



**LIVING ROOM**



Kitchen



Bedroom



THE ORIGINAL



Living Room



Closet



BEDROOM



## FREE TIME

The combination of a large number of black aluminum frames and gray door, soft gray texture and local gloomy and mysterious black, forms the relationship between light and dark, makes the space more hierarchical and textured, and creates a simple and comfortable home atmosphere.





Closet



Toilet



Dining Room



Porch



**LIVING ROOM**

## URBAN LADY

The "Urban Lady" design is inspired by women's vogue bags. The whole product is based on PVC warm white color, and the walnut color block is partially decorated with gold. Combining women's understanding of warm, vogue and luxury, the door type of the whole set of products is specially designed into a fashionable micro-formation form. Which adopts the surface treatment effect of the skin texture, and strives to achieve a warm and elegant artistic conception.



Dining Room



KITCHEN



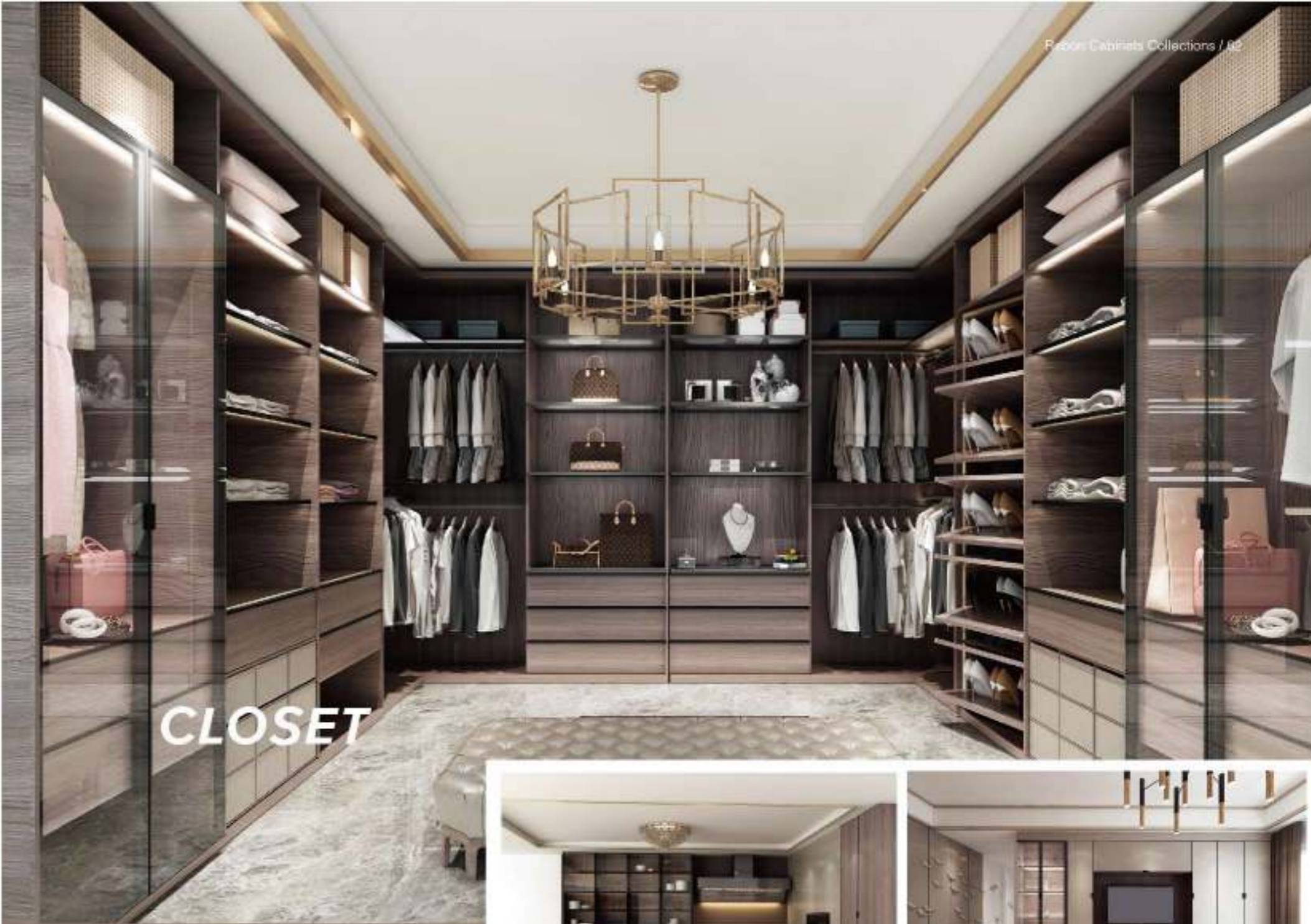


## URBAN UPSTART

The perfect fusion of modern and classical, the modern luxury style of the whole house works - Urban Upstart Looks like a kind of hidden aristocratic temperament under the simple appearance.



*BEDROOM*



*CLOSET*





**DINING ROOM**

## LA CALIFORNIA

The overall wooden moist-proof kitchen cabinet design area is reasonable to meet various accommodation needs, and the embedded kitchen appliances effectively save indoor space. And after matching with the small dining table, the kitchen perfectly presents an American - style casual attitude to life.



**KITCHEN**





LIVING ROOM



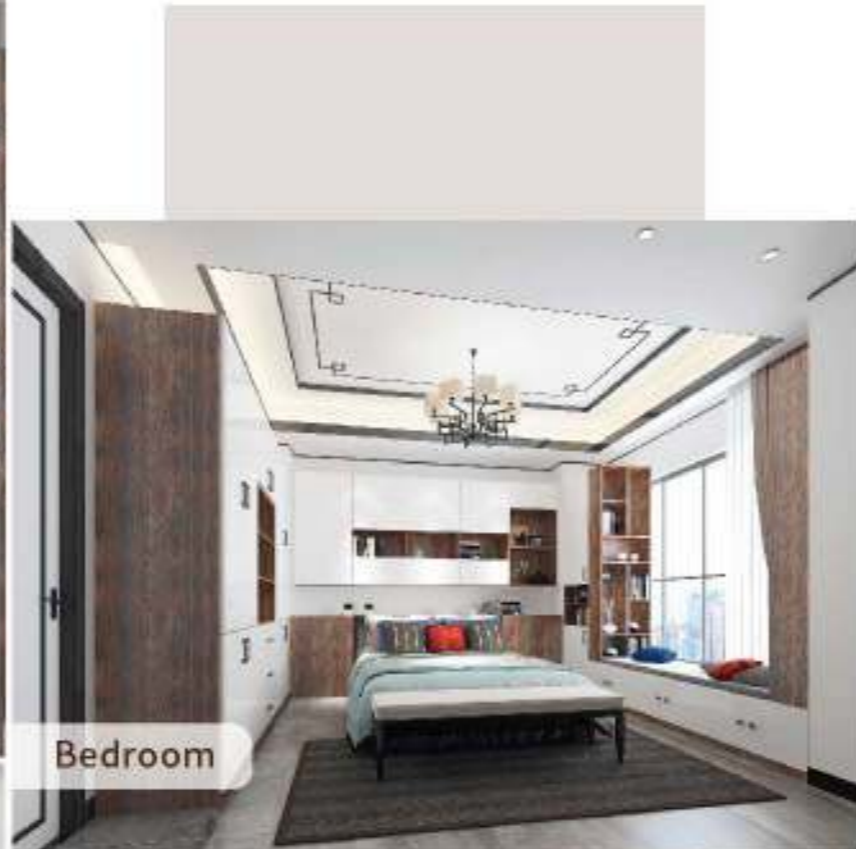
## MEMORY JIANGNAN

According to different functional requirements, basket, seasoning basket, dish basket and the like are arranged in the base cabinet so as to reasonably utilize the storage space in the kitchen.





Dining Room



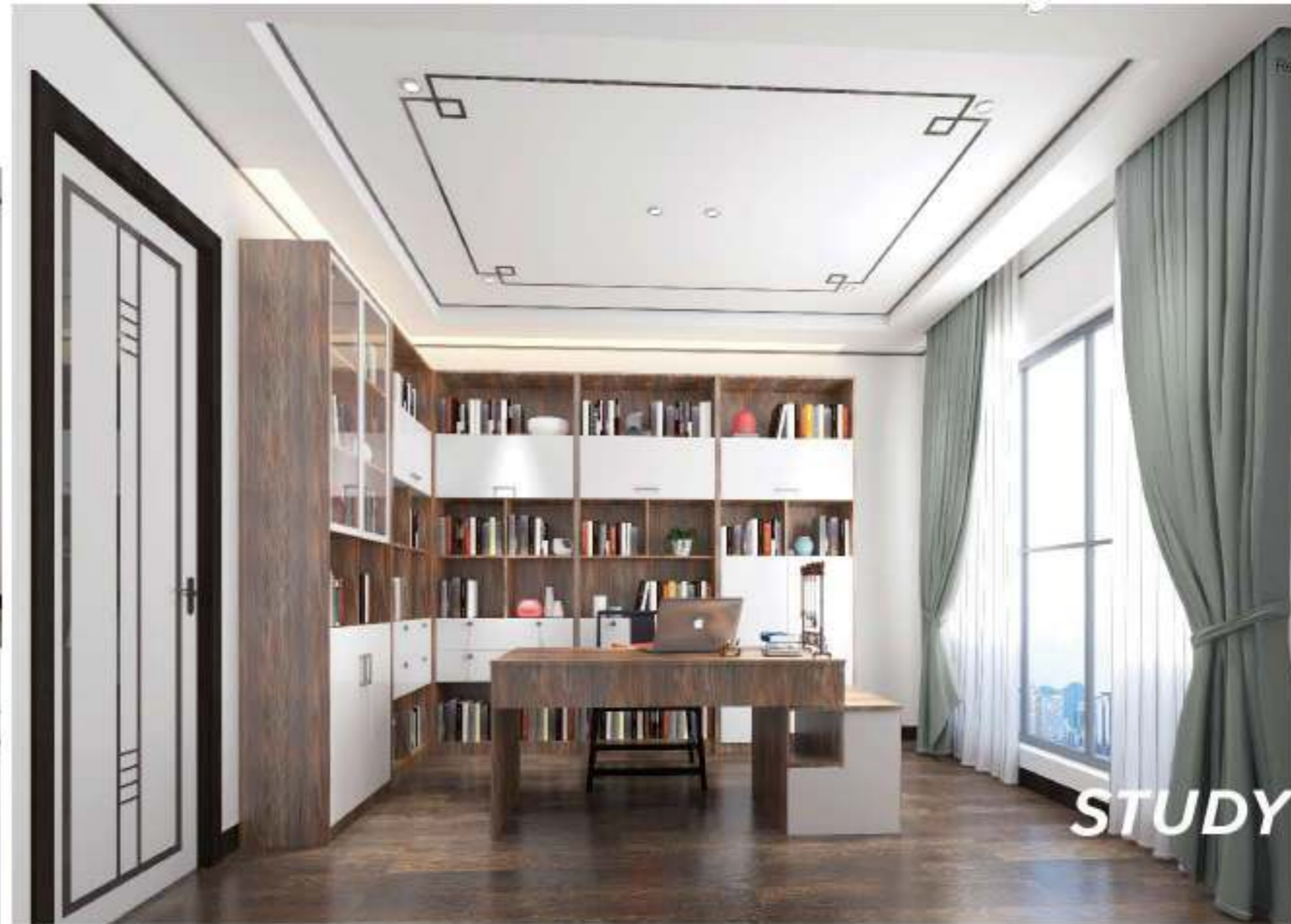
Bedroom



Kitchen



Piano Room



**STUDY ROOM**



Toilet



Tatami



wine cabinet



Living Room

## Elizabeth II

High sense is both pragmatic. Elizabeth II no longer inherits the seriousness and formality of classical French. The designer softens the "complexity" of French and the "simplicity" of modern, giving it a more cordial and flexible side.



kitchen



Dining Room



Closet



Study

## White Jade III

Originated from ancient Greek and Roman culture, the modern simple European style, with simple colors and simple lines, attract people inadvertently. A sharp contrast between cool white and warm wood grain, when the sunlight penetrates into the room, enjoy this beautiful moment with family.

Simple European style is more minimalist and close to nature. At the same time, it abandons the complicated texture and decoration, simplifies the lines, endows fashion temperament, and gives consideration to practicality and diversity, with luxury and elegance and romance just right.



Living Room



Study



Closet



Dining Room



Kitchen



Bedroom



# KITCHEN

## COFFEE LUMIERE III

Pure white, vibrant brown, fresh and eye-catching, following the American luxury design style, creating a visual space full of beauty, and elegance touch the bottom of your heart.

Simple geometric lines collide with modern luxurious, fashionable and romantic elements, which are freely combined in space with different shapes, materials and proportions, so that the space is full of vitality and ever-changing beauty, and a casual romance is inadvertently achieved. Full of warm details, this world is filled with a warm in the home, which accords with the pursuit of petty bourgeoisie lifestyle by young people nowadays.





Bedroom



Living Room



Closet

Bedroom



Study

Dining Room

# KITCHEN

## LOVE IN CITY

The island cabinet of LOVE IN CITY is not only beautiful and elegant,

but also integrates multiple functions such as a dining table, a storage table, an invisible table, with the turnover socket, plays an important role in the kitchen.

Transform the ordinary kitchen into a social space full of emotional appeal.



# NORDIC IMPRESSION

Adhering to the refined life concept of northern Europe, we on the basis of the 30 - degree gray tone, the chaotic natural texture is combined with the repeated rectangular structure to carve it. Tiffany's blue creates a soothing rhythm without losing style, and adds a small amount of technical black elements to improve the quality of the whole space.



**KITCHEN**



**Toilet**



**Study**



**Bedroom**



**Living room**

## Melamine Faced Chipboard Door

Base Board : 18mm E1 Particle Board

Advantages: Economic And Durable



HM2302



HM2304



HM2306



HM2307



HM2308



HM2309



GL2302



GL2303



GL2304



GL2305



GL2306



GL2307



GL2308



HM2311



HM2312



HM2313



HM2314



HM2315



HM2316



GL2309



GL2310



GL2311



GL2312



GL2313



GL2314



GL2315



GL2316



GL2317



GL2318



GL2319



GL2320

## PVC Door

Base Board : E1 MDF

Advantages: Molding Available



MX-Z2301+T023



MX-Z2302+T165



MX-Z2303+T181



MX-Z2304+T158



MX-Z2305+T162



MX-Z2306+T160



MX-Z2307-A+T011



MX-Z2307-B+T172



MX-Z2308-B+T163



MX-Z2309-A+T3248P-913

## PET Door

Base Board : 18mm ENF Particle Board

Advantages: Environmental-friendly, Moisture-proof,  
Wear Resistance, Heat Resistance, Corrosion Resistance.



QY2302



QY2303



QY2304



QY2305



QY2306



QY2307



S-LZ2301



S-LZ2302



S-LZ2303



S-LZ2304



S-LZ2305



S-LZ2306



XY2301



XY2302



XY2303



XY2304



XY2305



XY2306

## Lacquered Door

Advantages: Anti-scratch Anti-yellowing Noble-appearance



DK2101 DK2101 DK2102 DK2103 DK2104 DK2105 DK2106 DK2107



DK2108 DK2109 DK2110 DK2301 DK1201 DK1202 DK1206 DK1502



DK1701 DK08506 DK08601 DK08611 DK08615 DK09505 DK10501 DK10601

## UV Door

Base Board : 18mm E1 MDF Advantages: High Gloss, Color Resistant



JC1803 JC1806 JC2101 JC2102 JC2103 JC2104 JC2105



JC2107 JC2111 JC2112 JC2113 JC2201 JC2202

## Solid Wood Door

Base Board : cherry,oak,ash,maple,walnut

Advantages: classical,luxury



BY-DM6676+Y01



BY-DM6677+Y02



BY-DM6678+Y03



BY-DM6680+Y08



BY-DM6681+Y09



BY-DM6682+Y10



DY-DM6693+Y20  
SM14909



DYQ-DM6631+Y21



DYQ-DM6694+Y07



DYQ-DM6695+Y22



DYQ-DM6696+Y23



BY-DM6684+Y12



BYQ-DM8861+Y05



DY-DM6685+Y13  
SM12902



DY-DM6686+Y14  
SM17901



DY-DM6687+Y15  
SM18903



DYQ-DM6697+Y24



DYQ-DM8827+Y26



DYQ-DM8842+Y06



DY-DM6688+Y16  
SM12904



DY-DM6689+Y25  
SM19903



DY-DM6690+Y17  
SM18901



DY-DM6691+Y18  
SM19907



DY-DM6692+Y19  
SM18905

## Powder Spraying Door

Advantages: Sand Pattern, Matte Frosted Texture, Delicate Touch



PF2202



PF2203



PF2204



PF2205



PF2206



PF2207

## Skin-friendly Board

Advantages: Sand Pattern, Matte Frosted Texture, Delicate Touch



LF2301



LF2302



LF2303



LF2304



LF2305



LF2306



LF2307



LF2308

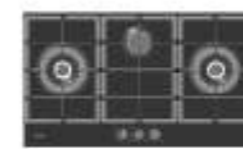
# DE&E KITCHEN APPLIANCES



## Range Hood & Hob Series



Range Hood



Hob

## Water Appliances Series



Gas Water Heater



Water Purifier



Electric Water Heater

## Built-In Kitchen Appliances Series



Steam Oven



Electric Oven



Steam&Gill Oven



Sterilizer



Dishwasher



Ranger Cooker



LinkedIn



Website



WeChat

<https://www.globaldee.com>

<https://www.linkedin.com/company/builtinhob>